


*Wain*  
HOMES



A place that lets you be you.  
That says everything about you.  
That feels good, feels right.  
Where life can be beautifully imperfect.  
And you love every moment of it.

YOUR KIND OF *perfect*

# HORIZON DEVELOPMENT PLAN



# HORIZON SPECIFICATION

## SILVER SPECIFICATION DETAILS

CHERRY | WHITEBEAM

### KITCHENS AND UTILITY

- Luxury Fitted Kitchen with a Choice of Finishes\*
- Laminate Worktops to Kitchen with Matching Upstands
- Stainless Steel AEG Single Electric Oven
- AEG Induction Hob
- Electrolux Stainless Steel Extractor Fan
- Stainless Steel One and a Half Bowl Sink to Kitchen
- Hansgrohe Single Level Kitchen Mixer
- LED Strip Light
- 60cm Glass Splashback

### Bathrooms

- Roca Sanitaryware
- Hansgrohe Brassware
- Thermostatic Showers and Bath Shower Mixers to En-suites and Bathrooms
- Full Height Tiling to all Shower Enclosures
- Bathroom and En-suites to be Half Tiled with a Choice of Wall Tiles From Tileflair\*
- Chrome Heated Towel Rail to Main Bathroom and En-suites
- Shaver Sockets to all Bathrooms and En-suites

### Bedrooms

- Television Aerial Point to Master Bedroom
- Telephone Point to Master Bedroom
- Data Point with Cat 6 Wiring to Master Bedroom

### Heating System

- Gas Central Heating with high efficiency boiler and Radiators.
- Honeywell "Smart" thermostats

### OTHER INTERNAL FEATURES

- All Ceilings to be Painted White
- All Walls to be Painted Wainhomes Soft Cream Finish
- Oak Handrail and Newel Caps
- Television Aerial Point to Lounge
- Telephone Point to Lounge
- Data Points with Cat 6 Wiring to Lounge and Family Room (where applicable)
- USB Sockets to Lounge, Kitchen, Family Room, all Bedrooms and Study (where applicable)
- Deta Stainless Steel Sockets to Kitchen and Adjoining Room
- 5 Panel Oak Doors
- White downlights to the Kitchen Area

### EXTERNAL FEATURES

- PVCu Double Glazed Windows / French Doors
- PVCu Fascia & Soffits
- GRP Composite Front and Rear Doors
- Black Rainwater Goods
- Doorbell
- External Lights to Front and Rear
- External Tap
- Power and Lighting to all Integral and Detached Garages within the curtilage of the plot
- Gardens Turfed/Landscaped to the Front
- Gardens Rotavated to Rear
- Electric Car Charging Unit
- PV Solar Panels to Roof

### Warranties

- 10 Year NHBC Buildmark Warranty
- 2 Year Wain Homes Warranty



AEG



\*\* Upgraded Kitchen Choices Available \* Subject to build stage



Wain Homes abides by the New Homes Quality Code, an independent industry code introduced to champion quality new homes and better consumer outcomes. Wain Homes Policy is continuous product and specification development. Images shown are for illustrative purposes only. Every effort has been made to ensure the accuracy of the information provided in this leaflet at the date of publication but it may be subject to change without notice. Specification choices are subject to build stage. Please consult with our Sales Executive to obtain the current specification or the specification of any particular plot. You should take appropriate steps to verify any information upon which you wish to rely. These particulars are intended for guidance only and their accuracy is not guaranteed. They do not constitute a contract, part of a contract or warranty. (October 2024)





# HORIZON SPECIFICATION

## GOLD SPECIFICATION DETAILS

HAWTHORN | HICKORY | HORNBEAM | MADEIRA

### KITCHENS AND UTILITY

- Luxury Fitted Kitchen with a Choice of Finishes\*
- Laminate Worktops to Kitchen with Matching Upstands
- Stainless Steel AEG Single Electric Oven
- AEG Induction Hob
- Electrolux Stainless Steel Extractor Fan
- Stainless Steel One and a Half Bowl Sink to Kitchen
- Hansgrohe Single Level Kitchen Mixer
- LED Strip Light
- 60cm Glass Splashback

### Bathrooms

- Roca Sanitaryware
- Hansgrohe Brassware
- Thermostatic Showers and Bath Shower Mixers to En-suites and Bathrooms
- Full Height Tiling to all Shower Enclosures
- Bathroom and En-suites to be Half Tiled with a Choice of Wall Tiles From Tileflair\*
- Chrome Heated Towel Rail to Main Bathroom and En-suites
- Shaver Sockets to all Bathrooms and En-suites

### Bedrooms

- Television Aerial Point to Master Bedroom
- Telephone Point to Master Bedroom
- Data Point with Cat 6 Wiring to Master Bedroom

### Heating System

- Gas Central Heating with high efficiency boiler and Radiators.
- Honeywell "Smart" thermostats

### OTHER INTERNAL FEATURES

- All Ceilings to be Painted White
- All Walls to be Painted Wainhomes Soft Cream Finish
- Oak Handrail and Newel Caps
- Television Aerial Point to Lounge
- Telephone Point to Lounge
- Data Points with Cat 6 Wiring to Lounge and Family Room (where applicable)
- USB Sockets to Lounge, Kitchen, Family Room, all Bedrooms and Study (where applicable)
- Deta Stainless Steel Sockets to Kitchen and Adjoining Room
- 5 Panel Oak Doors
- White downlights to the Kitchen Area

### EXTERNAL FEATURES

- PVCu Double Glazed Windows / French Doors
- PVCu Fascia & Soffits
- GRP Composite Front and Rear Doors
- Black Rainwater Goods
- Doorbell
- External Lights to Front and Rear
- External Tap
- Power and Lighting to all Integral and Detached Garages within the curtilage of the plot
- Gardens Turfed/Landscaped to the Front
- Gardens Rotavated to Rear
- Electric Car Charging Unit
- PV Solar Panels to Roof

### Warranties

- 10 Year NHBC Buildmark Warranty
- 2 Year Wain Homes Warranty



AEG



Honeywell

\*\* Upgraded Kitchen Choices Available \* Subject to build stage



Wain Homes abides by the New Homes Quality Code, an independent industry code introduced to champion quality new homes and better consumer outcomes. Wain Homes Policy is continuous product and specification development. Images shown are for illustrative purposes only. Every effort has been made to ensure the accuracy of the information provided in this leaflet at the date of publication but it may be subject to change without notice. Specification choices are subject to build stage. Please consult with our Sales Executive to obtain the current specification or the specification of any particular plot. You should take appropriate steps to verify any information upon which you wish to rely. These particulars are intended for guidance only and their accuracy is not guaranteed. They do not constitute a contract, part of a contract or warranty. (October October 2024)



# HORIZON SPECIFICATION

## PLATINUM SPECIFICATION DETAILS

BIRCH | LARCH

### KITCHENS AND UTILITY

- Luxury Fitted Kitchen with a Choice of Finishes\*
- Laminate Worktops to Kitchen with Matching Upstands
- Stainless Steel AEG Single Electric Oven
- AEG Induction Hob
- Electrolux Stainless Steel Extractor Fan
- Stainless Steel One and a Half Bowl Sink to Kitchen
- Hansgrohe Single Level Kitchen Mixer
- LED Strip Light
- 60cm Glass Splashback

### Bathrooms

- Roca Sanitaryware
- Hansgrohe Brassware
- Thermostatic Showers and Bath Shower Mixers to En-suites and Bathrooms
- Full Height Tiling to all Shower Enclosures
- Bathroom and En-suites to be Half Tiled with a Choice of Wall Tiles From Tileflair\*
- Chrome Heated Towel Rail to Main Bathroom and En-suites
- Shaver Sockets to all Bathrooms and En-suites

### Bedrooms

- Television Aerial Point to Master Bedroom
- Telephone Point to Master Bedroom
- Data Point with Cat 6 Wiring to Master Bedroom

### Heating System

- Gas Central Heating with high efficiency boiler and Radiators.
- Honeywell "Smart" thermostats

### OTHER INTERNAL FEATURES

- All Ceilings to be Painted White
- All Walls to be Painted Wainhomes Soft Cream Finish
- Oak Handrail and Newel Caps
- Television Aerial Point to Lounge
- Telephone Point to Lounge
- Data Points with Cat 6 Wiring to Lounge and Family Room (where applicable)
- USB Sockets to Lounge, Kitchen, Family Room, all Bedrooms and Study (where applicable)
- Deta Stainless Steel Sockets to Kitchen and Adjoining Room
- 5 Panel Oak Doors
- White downlights to the Kitchen Area

### EXTERNAL FEATURES

- PVCu Double Glazed Windows / French Doors
- PVCu Fascia & Soffits
- GRP Composite Front and Rear Doors
- Black Rainwater Goods
- Doorbell
- External Lights to Front and Rear
- External Tap
- Power and Lighting to all Integral and Detached Garages within the curtilage of the plot
- Gardens Turfed/Landscaped to the Front
- Gardens Rotavated to Rear
- Electric Car Charging Unit
- PV Solar Panels to Roof

### Warranties

- 10 Year NHBC Buildmark Warranty
- 2 Year Wain Homes Warranty



AEG



Honeywell

\*\* Upgraded Kitchen Choices Available \* Subject to build stage



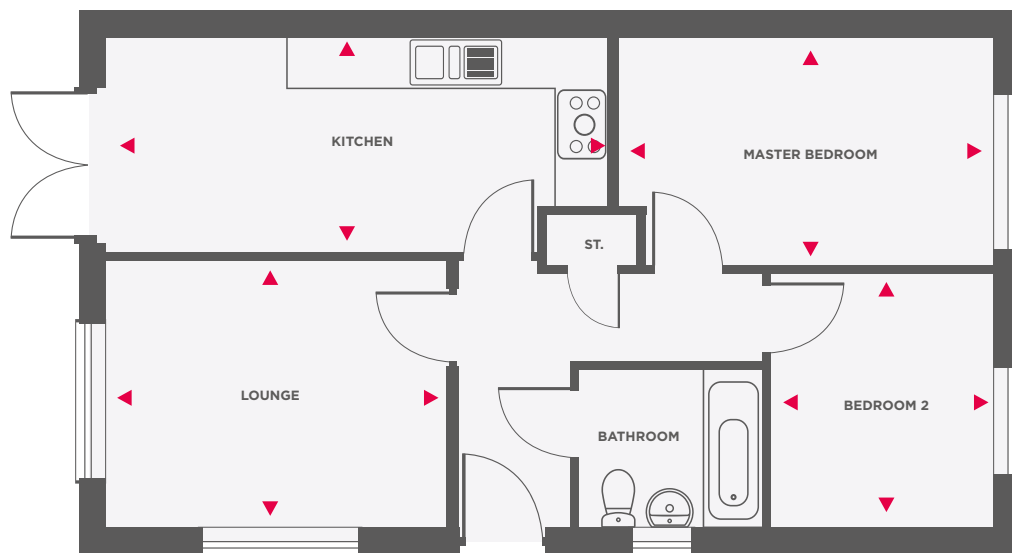
Wain Homes abides by the New Homes Quality Code, an independent industry code introduced to champion quality new homes and better consumer outcomes. Wain Homes Policy is continuous product and specification development. Images shown are for illustrative purposes only. Every effort has been made to ensure the accuracy of the information provided in this leaflet at the date of publication but it may be subject to change without notice. Specification choices are subject to build stage. Please consult with our Sales Executive to obtain the current specification or the specification of any particular plot. You should take appropriate steps to verify any information upon which you wish to rely. These particulars are intended for guidance only and their accuracy is not guaranteed. They do not constitute a contract, part of a contract or warranty. (October 2024)





# THE TURNER

## 2 BEDROOM BUNGALOW HOME



Kitchen	5836mm x 2516mm	19'2" x 8'3"
Lounge	3972mm x 3111mm	13'0" x 10'2"

Master Bedroom	4353mm x 2666mm	14'3" x 8'9"
Bedroom 2	2593mm x 2962mm	8'6" x 9'9"

Dimensions shown are internal finished dimensions which may vary as each home is built individually and the precise internal finished may not always be the same. Please be aware that window and door positions could vary due to plot orientation. It is essential to view the working drawings with our Sales Executive for plot specific detail. Enquire for further information.

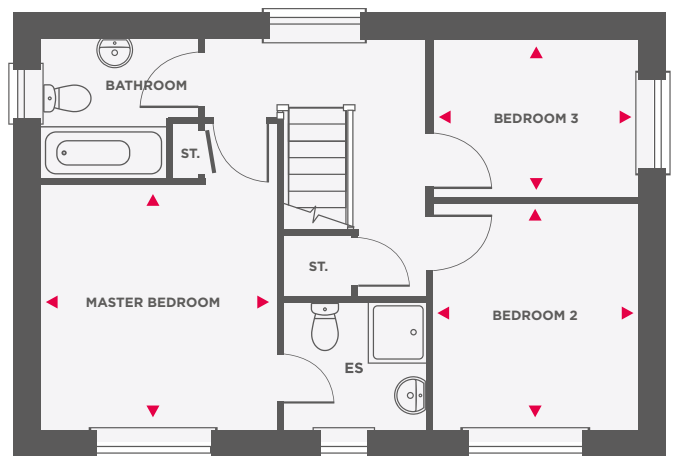
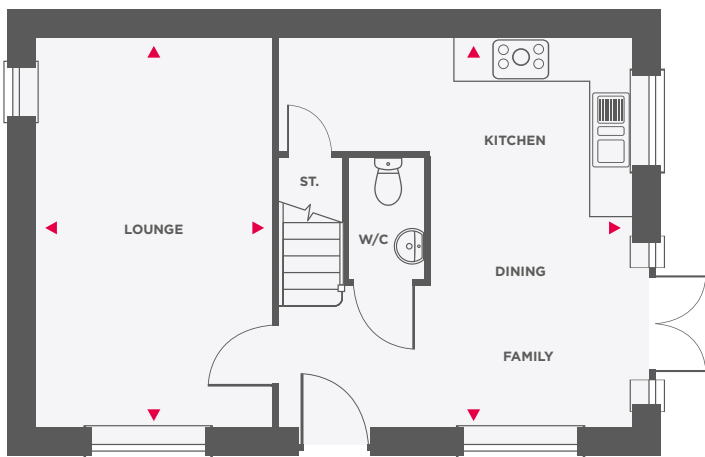
Wain Homes Policy is continuous product and specification development. Every effort has been made to ensure the accuracy of the Sales Executive to obtain the current specification. You should take appropriate steps to verify any information upon which you wish to rely. The sizes indicated are not intended to be used for carpet sizes, appliance spaces or items of furniture. Elevational treatments may vary to those shown. These particulars are intended for guidance only and their accuracy is not guaranteed. They do not constitute a contract, part of a contract or warranty. (October 2024)





# THE WHITEBEAM

## 3 BEDROOM SEMI DETACHED HOME



Kitchen/Dining	4853.5mm x 5360mm	15'11" x 17'7"
Lounge	3256mm x 5360mm	10'8" x 17'7"

Master Bedroom	3256mm x 3371mm	10'8" x 11'1"
Bedroom 2	2828.5mm x 3114.5mm	9'3" x 10'3"
Bedroom 3	2828.5mm x 2182.5mm	9'3" x 7'2"

Dimensions shown are internal finished dimensions which may vary as each home is built individually and the precise internal finished may not always be the same. Please be aware that window and door positions could vary due to plot orientation. It is essential to view the working drawings with our Sales Executive for plot specific detail. Enquire for further information.

Wain Homes Policy is continuous product and specification development. Every effort has been made to ensure the accuracy of the Sales Executive to obtain the current specification. You should take appropriate steps to verify any information upon which you wish to rely. The sizes indicated are not intended to be used for carpet sizes, appliance spaces or items of furniture. Elevational treatments may vary to those shown. These particulars are intended for guidance only and their accuracy is not guaranteed. They do not constitute a contract, part of a contract or warranty. (October 2024)

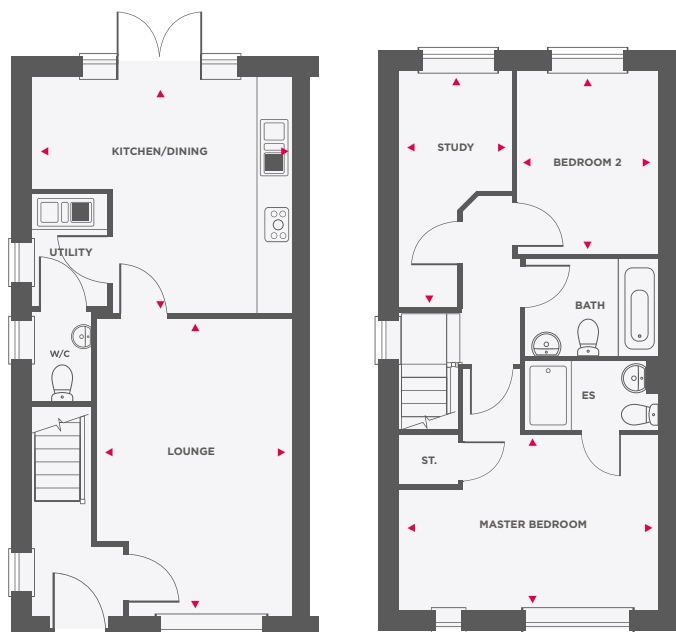
*Wain*  
HOMES





# THE CHERRY

## 2 BEDROOM SEMI DETACHED HOME



Kitchen/Dining	4555.5mm x 4137mm	14'11" x 13'7"
Lounge	3436mm x 5210mm	11'3" x 17'1"
Study	2003.5mm x 4136.5mm	6'7" x 13'7"

Master Bedroom	4555.5mm x 3070.5mm	14'11" x 10'1"
Bedroom 2	2489mm x 3200mm	8'2" x 10'6"

Dimensions shown are internal finished dimensions which may vary as each home is built individually and the precise internal finished may not always be the same. Please be aware that window and door positions could vary due to plot orientation. It is essential to view the working drawings with our Sales Executive for plot specific detail. Enquire for further information.

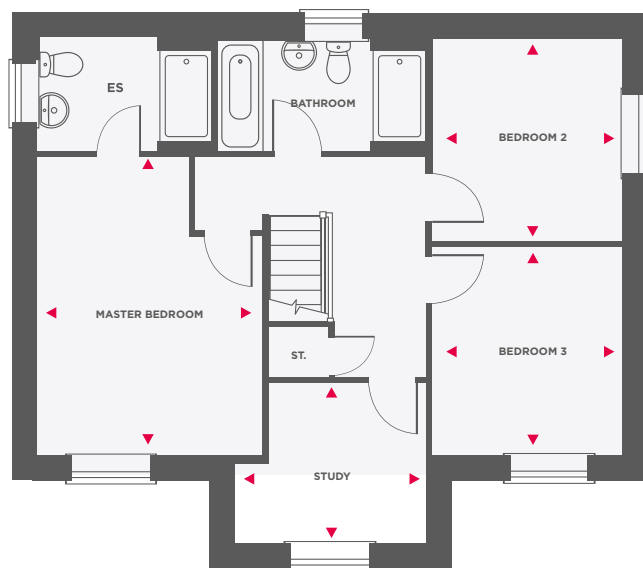
Wain Homes Policy is continuous product and specification development. Every effort has been made to ensure the accuracy of the Sales Executive to obtain the current specification. You should take appropriate steps to verify any information upon which you wish to rely. The sizes indicated are not intended to be used for carpet sizes, appliance spaces or items of furniture. Elevational treatments may vary to those shown. These particulars are intended for guidance only and their accuracy is not guaranteed. They do not constitute a contract, part of a contract or warranty. (October 2024)

**Wain**  
HOMES



# THE HORNBEAM

## 3 BEDROOM DETACHED HOMES



Kitchen/Dining	5516mm x 6485mm	18'1" x 21'3"
Lounge	3456mm x 6485.5mm	11'4" x 21'3"
Study	2997.5mm x 2506mm	9'10" x 8'3"

Master Bedroom	3037.5mm x 4634mm	10'0" x 15'2"
Bedroom 2	2975mm x 3166mm	9'9" x 10'5"
Bedroom 3	2975mm x 3256mm	9'9" x 10'8"

Dimensions shown are internal finished dimensions which may vary as each home is built individually and the precise internal finished may not always be the same. Please be aware that window and door positions could vary due to plot orientation. It is essential to view the working drawings with our Sales Executive for plot specific detail. Enquire for further information.

Wain Homes Policy is continuous product and specification development. Every effort has been made to ensure the accuracy of the Sales Executive to obtain the current specification. You should take appropriate steps to verify any information upon which you wish to rely. The sizes indicated are not intended to be used for carpet sizes, appliance spaces or items of furniture. Elevational treatments may vary to those shown. These particulars are intended for guidance only and their accuracy is not guaranteed. They do not constitute a contract, part of a contract or warranty. (October 2024)

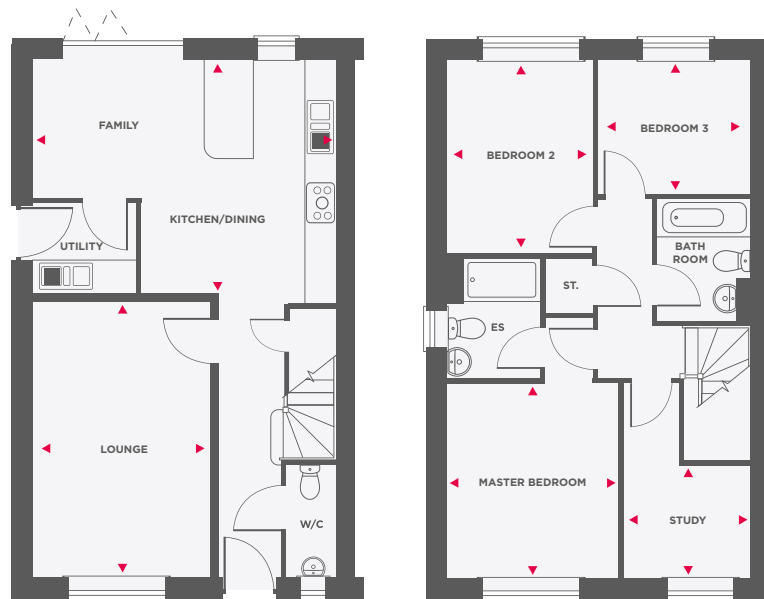
**Wain**  
HOMES





# THE HICKORY

## 3 BEDROOM SEMI DETACHED HOMES



Kitchen/Dining	5585mm x 4510.5mm	18'4" x 14'10"
Lounge	3300mm x 5100mm	10'10" x 16'9"
Study	2311mm x 3570mm	7'7" x 8'5"

Master Bedroom	3174mm x 3607mm	10'5" x 11'10"
Bedroom 2	2696mm x 3567mm	8'10" x 11'8"
Bedroom 3	2789mm x 2442mm	9'2" x 8'0"

Dimensions shown are internal finished dimensions which may vary as each home is built individually and the precise internal finished may not always be the same. Please be aware that window and door positions could vary due to plot orientation. It is essential to view the working drawings with our Sales Executive for plot specific detail. Enquire for further information.

Wain Homes Policy is continuous product and specification development. Every effort has been made to ensure the accuracy of the Sales Executive to obtain the current specification. You should take appropriate steps to verify any information upon which you wish to rely. The sizes indicated are not intended to be used for carpet sizes, appliance spaces or items of furniture. Elevational treatments may vary to those shown. These particulars are intended for guidance only and their accuracy is not guaranteed. They do not constitute a contract, part of a contract or warranty. (October 2024)

**Wain**  
HOMES





# THE LARCH

## 4 BEDROOM DETACHED HOME



Kitchen/Dining	5628.5mm x 4778.5mm	18'6" x 15'8"
Lounge	3906mm x 5966.5mm	12'10" x 19'7"
Study	2494mm x 2985mm	8'2" x 9'10"

Master Bedroom	4797.5mm x 3244.5mm	15'9" x 10'8"
Bedroom 2	5910.5mm x 3189mm	19'5" x 10'6"
Bedroom 3	3649.5mm x 3262mm	12'0" x 10'8"
Bedroom 4	2750mm x 3221mm	9'0" x 10'7"

Dimensions shown are internal finished dimensions which may vary as each home is built individually and the precise internal finished may not always be the same. Please be aware that window and door positions could vary due to plot orientation. It is essential to view the working drawings with our Sales Executive for plot specific detail. Enquire for further information.

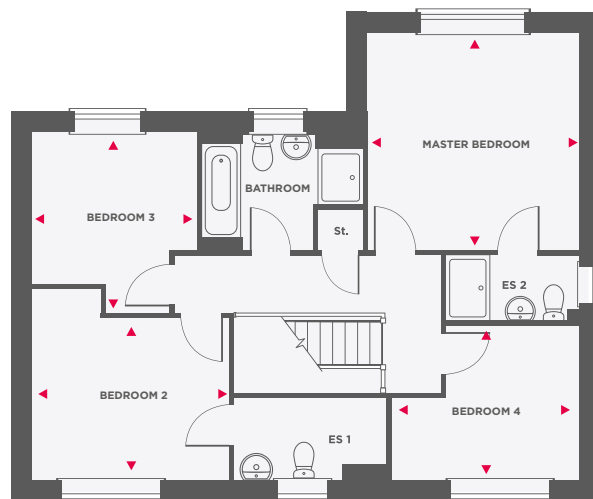
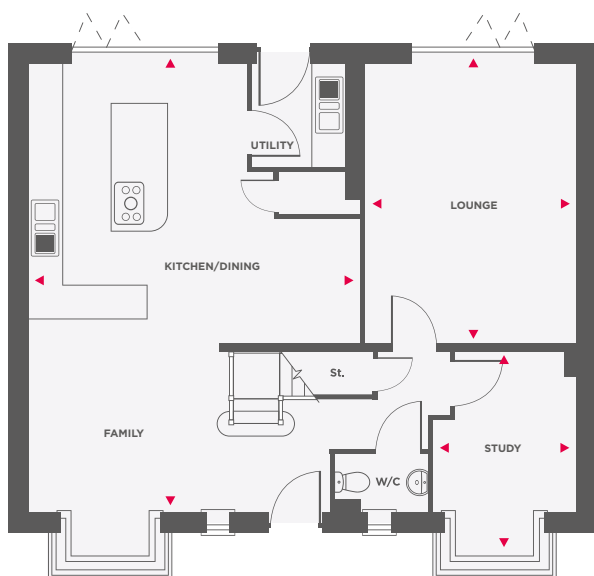
Wain Homes Policy is continuous product and specification development. Every effort has been made to ensure the accuracy of the Sales Executive to obtain the current specification. You should take appropriate steps to verify any information upon which you wish to rely. The sizes indicated are not intended to be used for carpet sizes, appliance spaces or items of furniture. Elevational treatments may vary to those shown. These particulars are intended for guidance only and their accuracy is not guaranteed. They do not constitute a contract, part of a contract or warranty. (October 2024)

**Wain**  
HOMES



# THE BIRCH

## 4 BEDROOM DETACHED HOME



Kitchen/Dining	6081.5mm x 8172.5mm	19'11" x 26'10"
Lounge	3891mm x 5119mm	12'9" x 16'10"
Study	2625mm x 2954mm	8'7" x 9'8"

Master Bedroom	3897mm x 3984mm	12'9" x 13'1"
Bedroom 2	3609mm x 3506mm	11'10" x 11'6"
Bedroom 3	3024.5mm x 2803.5mm	9'11" x 9'2"
Bedroom 4	3437mm x 2836mm	11'3" x 9'4"

Dimensions shown are internal finished dimensions which may vary as each home is built individually and the precise internal finished may not always be the same. Please be aware that window and door positions could vary due to plot orientation. It is essential to view the working drawings with our Sales Executive for plot specific detail. Enquire for further information.

Wain Homes Policy is continuous product and specification development. Every effort has been made to ensure the accuracy of the Sales Executive to obtain the current specification. You should take appropriate steps to verify any information upon which you wish to rely. The sizes indicated are not intended to be used for carpet sizes, appliance spaces or items of furniture. Elevational treatments may vary to those shown. These particulars are intended for guidance only and their accuracy is not guaranteed. They do not constitute a contract, part of a contract or warranty. (October 2024)

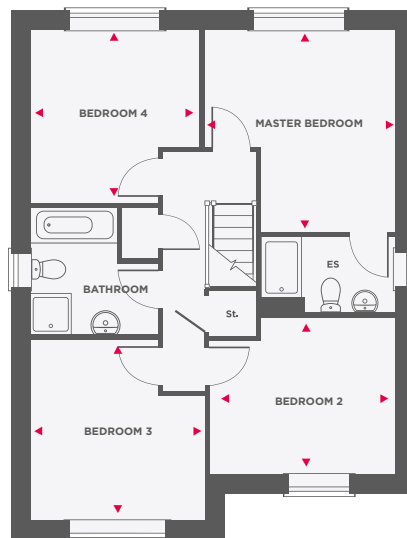
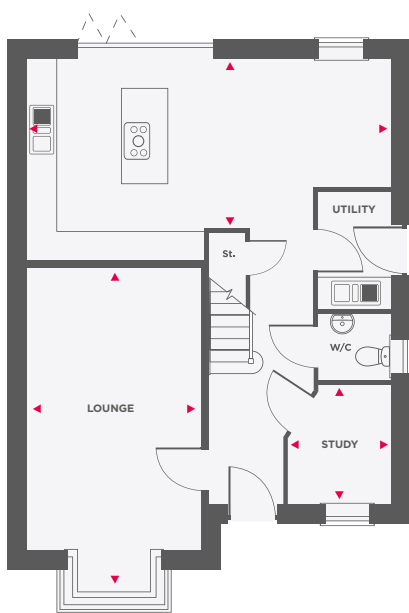
**Wain**  
HOMES





# THE MADEIRA

## 4 BEDROOM DETACHED HOME



Kitchen	7160mm x 3975mm	23'6" x 13'0"
Lounge	3447mm x 5560mm	11'4" x 18'3"
Study	2050mm x 2362.5mm	6'9" x 7'9"

Master Bedroom	3730mm x 3985.5mm	12'3" x 13'1"
Bedroom 2	3730mm x 3108mm	12'3" x 10'2"
Bedroom 3	3447.5mm x 3567mm	11'4" x 11'8"
Bedroom 4	3355mm x 3413mm	11'0" x 11'2"

Dimensions shown are internal finished dimensions which may vary as each home is built individually and the precise internal finished may not always be the same. Please be aware that window and door positions could vary due to plot orientation. It is essential to view the working drawings with our Sales Executive for plot specific detail. Enquire for further information.

Wain Homes Policy is continuous product and specification development. Every effort has been made to ensure the accuracy of the Sales Executive to obtain the current specification. You should take appropriate steps to verify any information upon which you wish to rely. The sizes indicated are not intended to be used for carpet sizes, appliance spaces or items of furniture. Elevational treatments may vary to those shown. These particulars are intended for guidance only and their accuracy is not guaranteed. They do not constitute a contract, part of a contract or warranty. (October 2024)

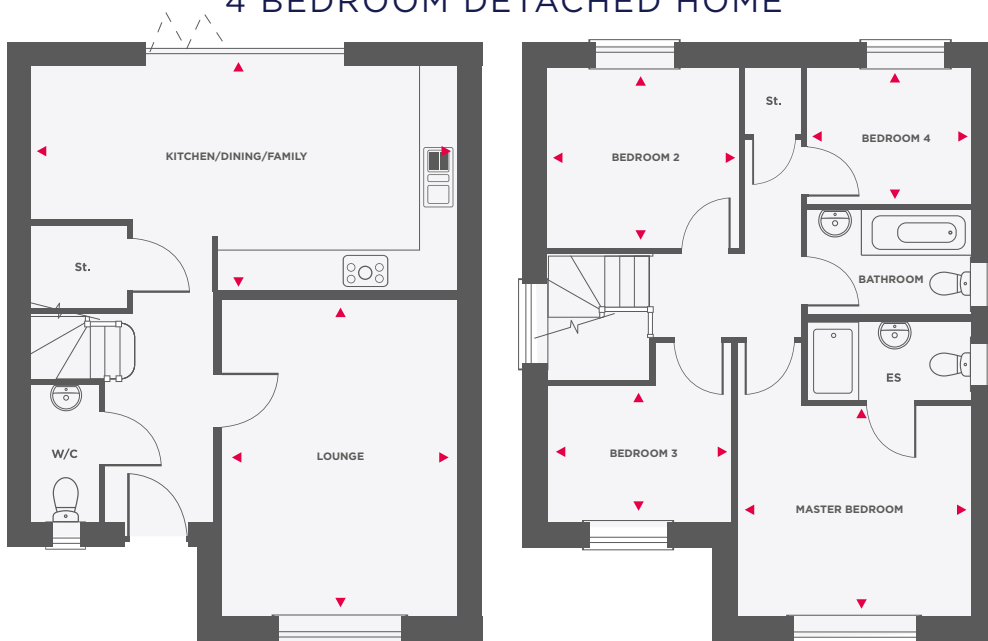
*Wain*  
HOMES





# THE HAWTHORN

## 4 BEDROOM DETACHED HOME



Kitchen/Dining	6597.5mm x 3481mm	21'8" x 11'5"
Lounge	3673mm x 4929mm	12'1" x 16'3"

Master Bedroom	3672.5mm x 3293.5mm	12'1" x 10'10"
Bedroom 2	2996.5mm x 2823.5mm	9'10" x 9'2"
Bedroom 3	2874.5mm x 2140mm	9'5" x 7'0"
Bedroom 4	2576.5mm x 2136.5mm	8'5" x 7'0"

Dimensions shown are internal finished dimensions which may vary as each home is built individually and the precise internal finished may not always be the same. Please be aware that window and door positions could vary due to plot orientation. It is essential to view the working drawings with our Sales Executive for plot specific detail. Enquire for further information.

Wain Homes Policy is continuous product and specification development. Every effort has been made to ensure the accuracy of the Sales Executive to obtain the current specification. You should take appropriate steps to verify any information upon which you wish to rely. The sizes indicated are not intended to be used for carpet sizes, appliance spaces or items of furniture. Elevational treatments may vary to those shown. These particulars are intended for guidance only and their accuracy is not guaranteed. They do not constitute a contract, part of a contract or warranty. (October 2024)

**Wain**  
HOMES